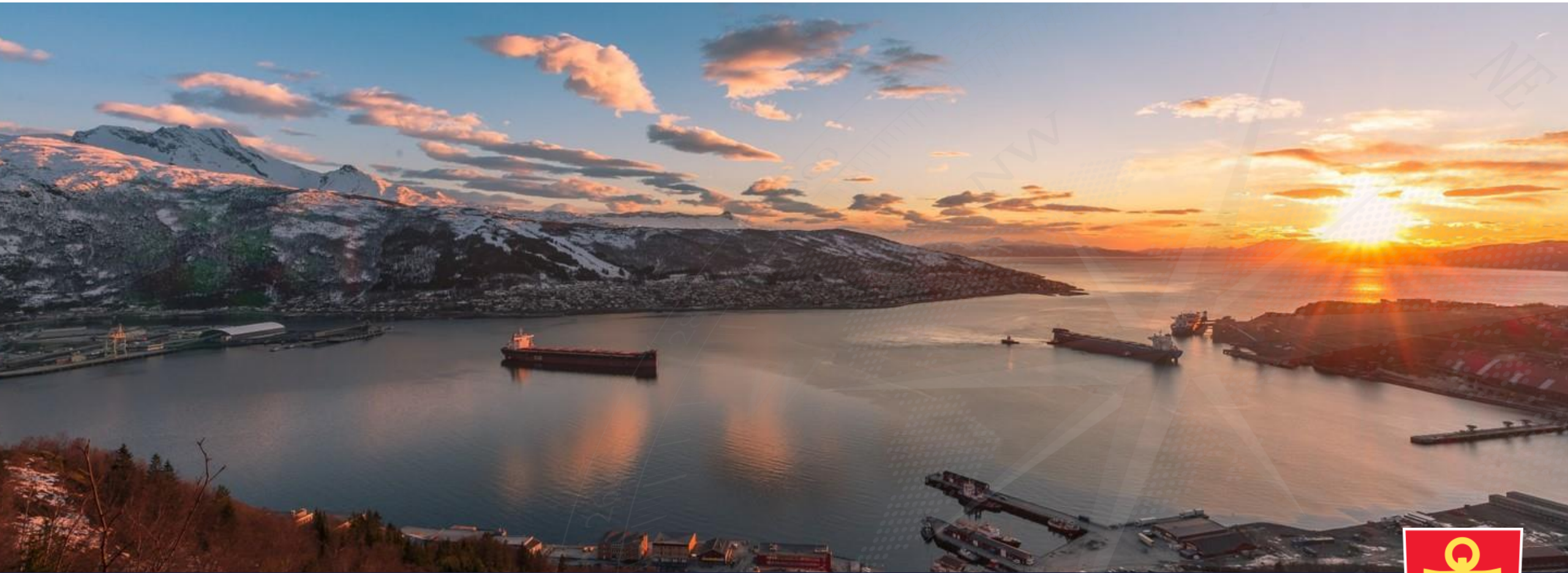


# Port of Narvik - The intermodal HUB in the north

October 2018



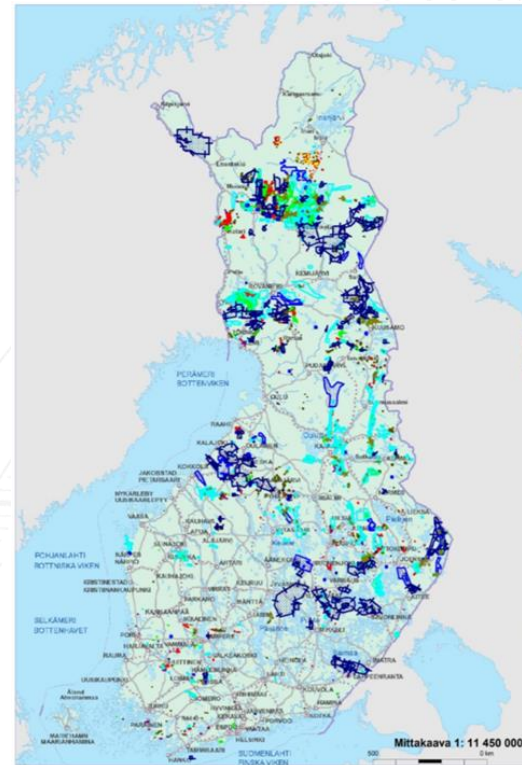
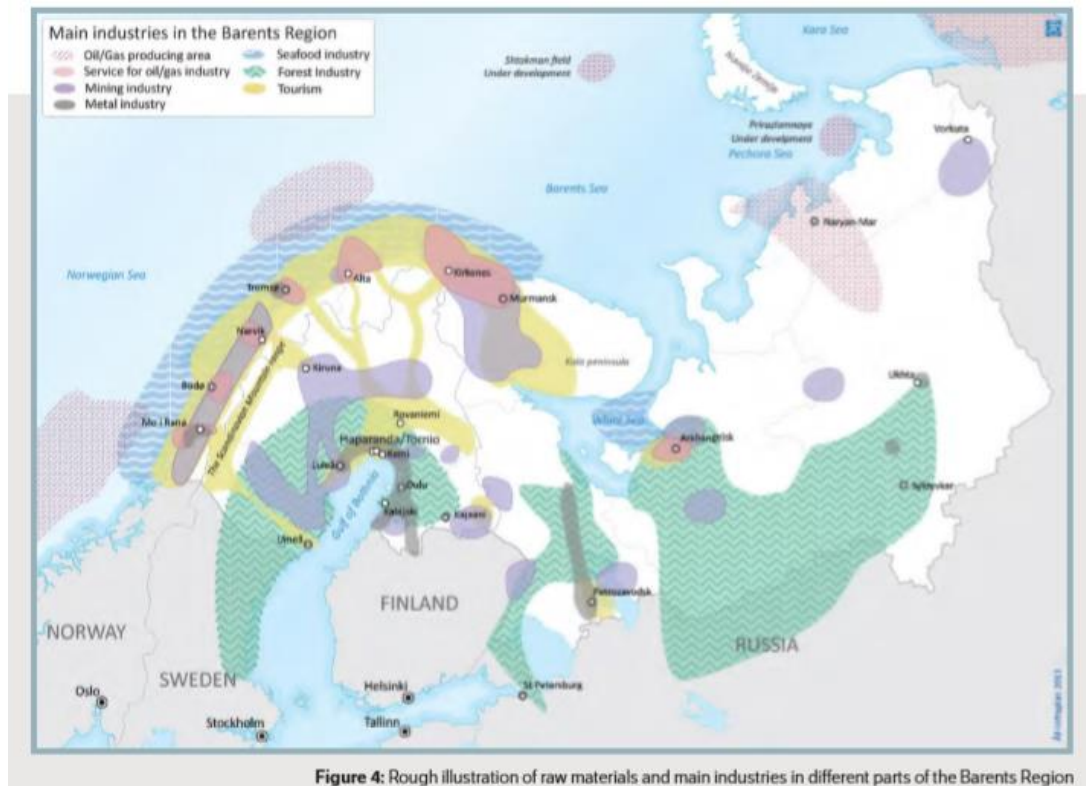
NARVIK HAVN KF

Rail | Road | Sea | Air



# The Barents Region

## Where there is a potential to find and develop new resources

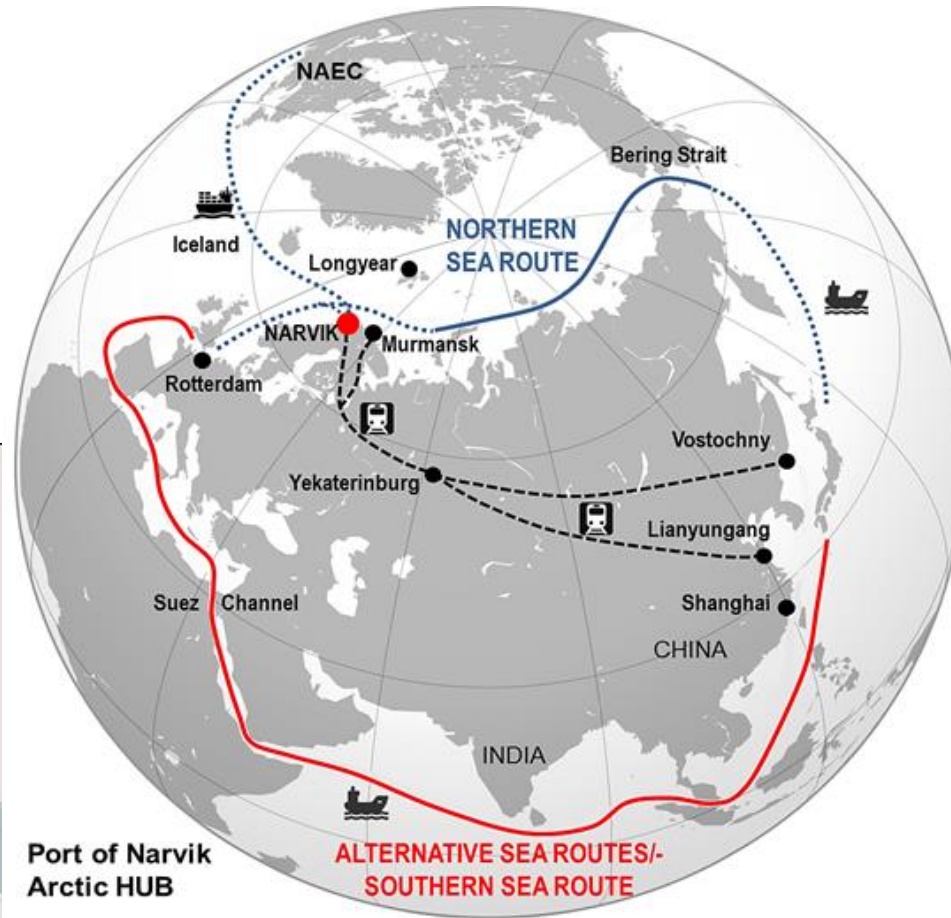


The Barents Region, Europe's industrial grain store:

- Oil/Gas
- Seafood Industry
- Mining Industry
- Rare-Earth Minerals
- Forest Industry
- And more
- Increasing fossil-free power production



# Narvik has an excellent geographical location



## Traffic

1. Iron ore and industrial minerals
2. Other traffic
  - Container
  - Project cargo
  - Passenger trains
  - Cruise
3. New potential for cargo
  - North – Sweden
  - North – Finland
  - New Silk Road
  - Narvik - Europe
  - NSR (Northern Sea Route)
4. Infrastructure projects
  - Double track Ofotbanen/Malmaban
  - Terminal areas
  - Cruise pier



# Port of Narvik as an ice-free Atlantic port



Basindustrierna i norr:  
Stärkt konkurrensförmåga kräver ökad  
tillgänglighet

1 (4)



**Core industries in the north:  
LKAB – Boliden – SSAB - Sveaskog**

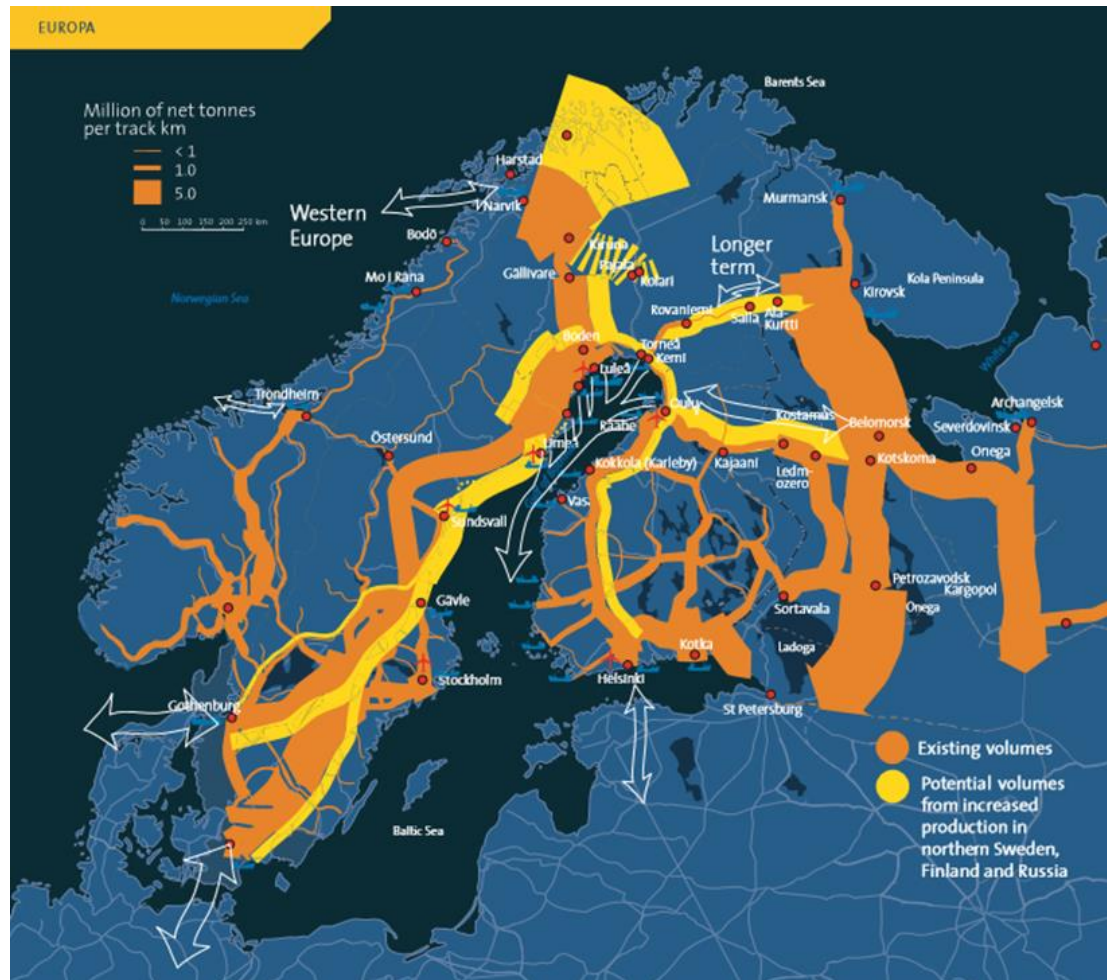
**«Port of Narvik as a supplement to Port  
of Gothenborg»**

- 000 -

**And a supplement to other Swedish and  
Finnish ports**



# Narvik – a freight hub/transit port



## What do we have?

- Electric-, heavy haul- and up to date railway
- Natural harbour, sheltered, ice-free with deep water quays
- On-dock rail

## Development plans

### Port of Narvik:

- Terminal, logistics and business areas
- Cruise

### Norwegian Rail Administration:

- Railway capacity , double track



# TRAFFIC LOAD RAIL - SEA



## LKAB

Iron ore: 20 mt/year – westbound  
Plans for a 5 % increase per year

Industrial minerals: 650.000 tons/year - eastbound

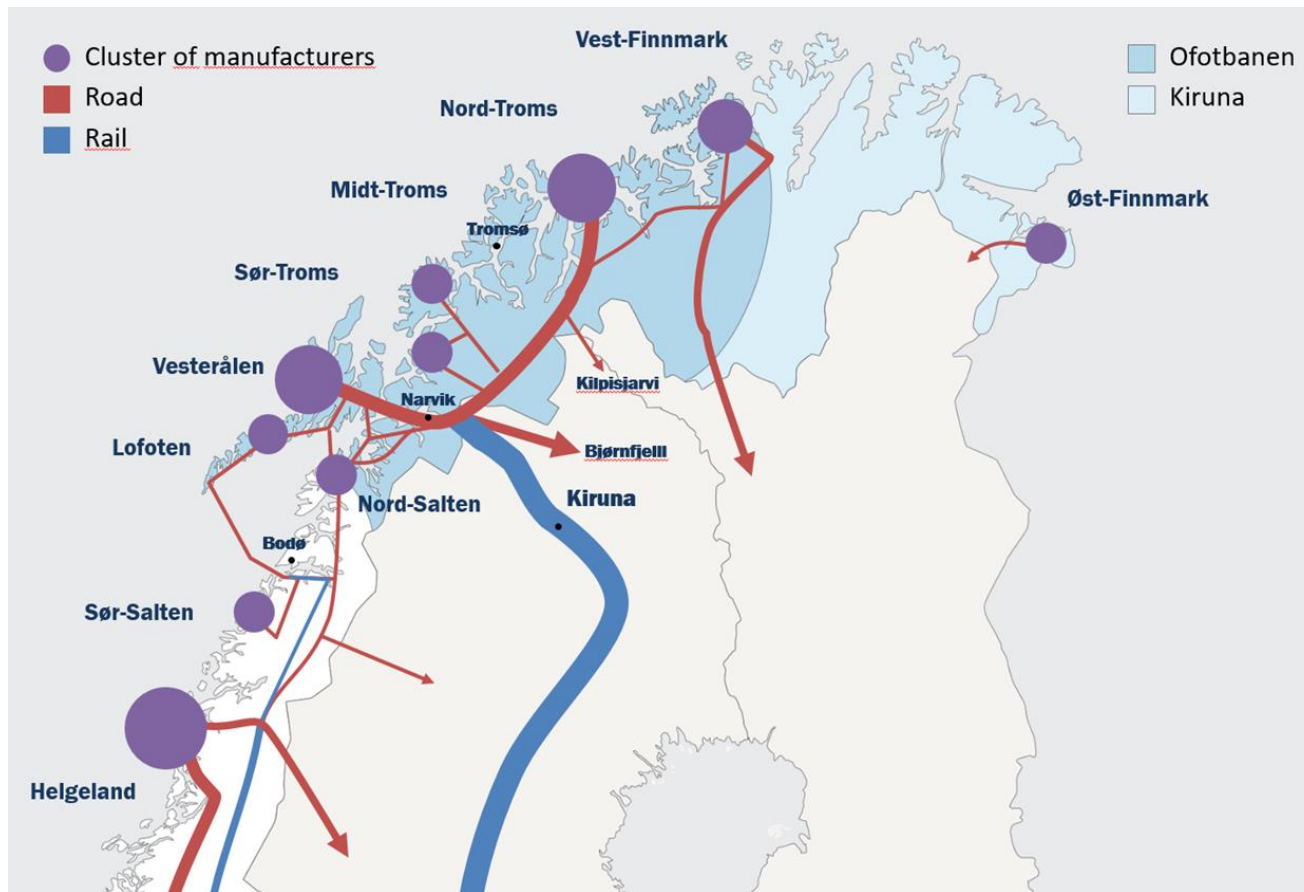
## Kaunis Iron

Iron ore: 2 mt/year – westbound, start up 2018

“We have a plant that is built to take 4 million tons of iron ore per year”



# TRAFFIC LOAD RAIL - ROAD



Transport of farmed and fresh salmon

## Narvik – Oslo

**CargoNet** (Arctic Rail Express)  
**DB Schenker** (North Rail Express)

100.000 TEU/Year, North- and Southbound

- Consumer Goods,
- Fresh fish (200.000 t/year)

Cars

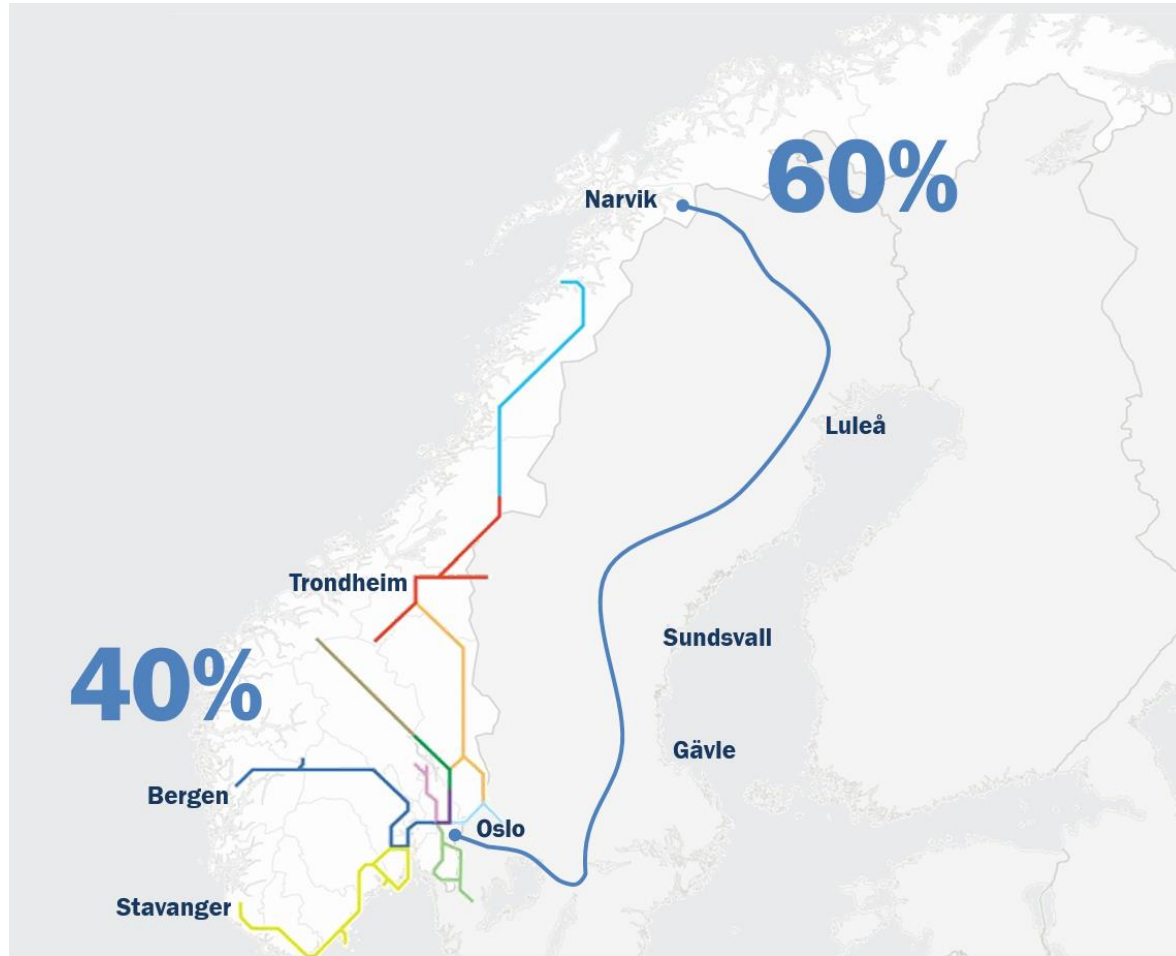
## Luleå – Narvik

**Green Cargo**

General Cargo and project cargo – East and Westbound



# Norway's most important cargo route by rail

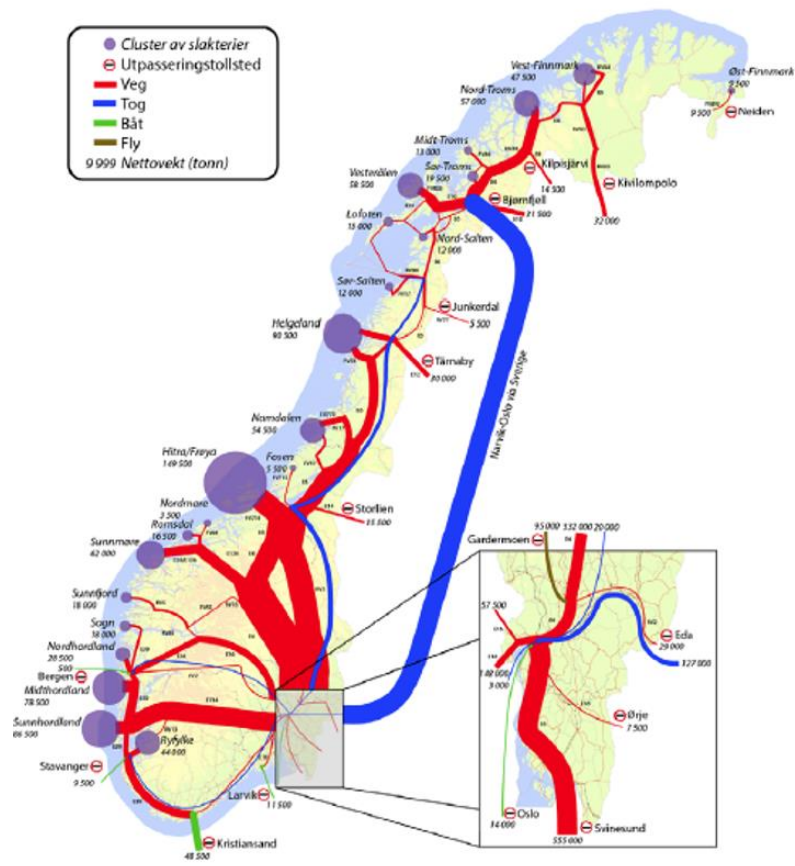


The main freight corridor to Northern Norway

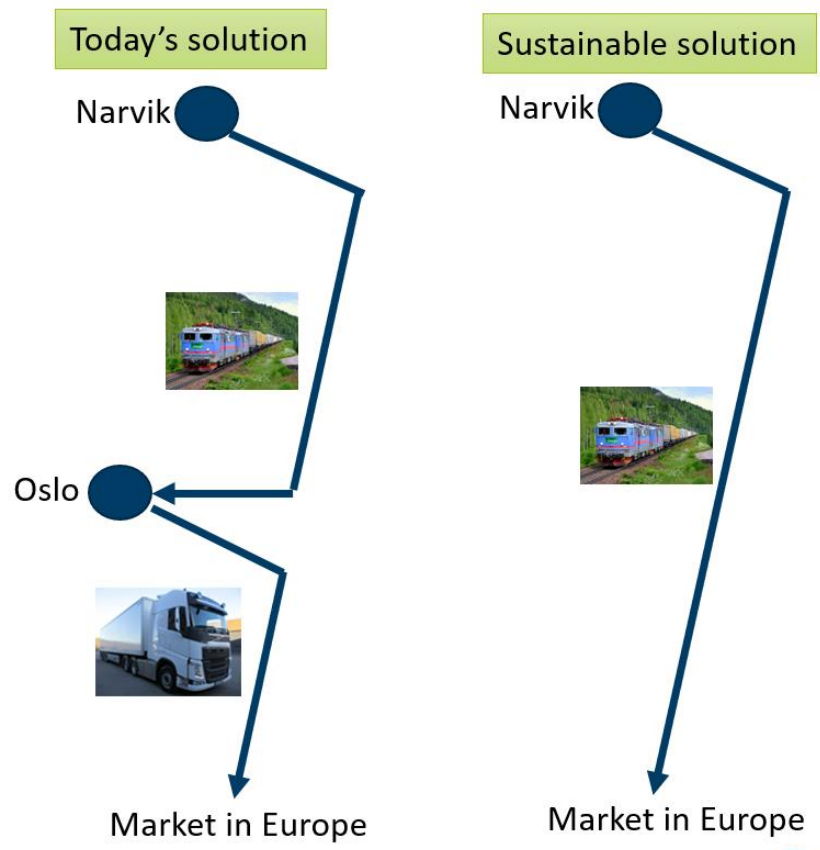




# Fresh salmon from the north



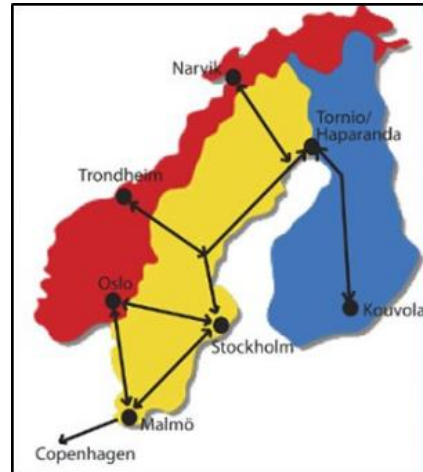
Kilde: Nord Universitet. 2013-tall



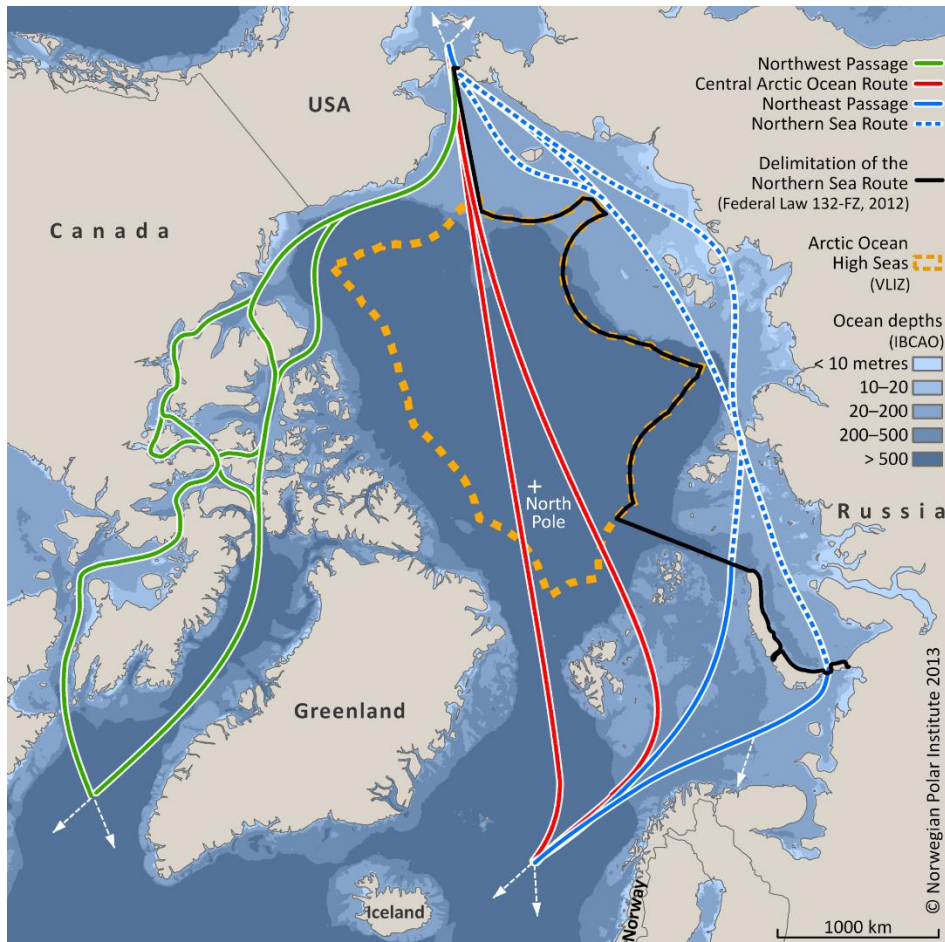
# NEW Silk Road – «One Belt One Road»

西安国际陆港投资发展集团有限公司  
Xi'an International Inland Port Investment  
& Development Group Co., Ltd.  
美卓集团  
Futurum A/S Narvik / Narvik Havn KF  
战略合作框架协议  
Strategic Cooperation Framework  
Agreement

2018年6月8日  
June 8, 2018



# Northern Sea Route and Central Arctic Ocean Route



## Central Arctic Ocean Route

- Shorter distance
- Larger depths
- Larger ships
- International Waters
- Near Spitsbergen

## Narvik

- A possible hub between large ports in Asia and Europe
- The northernmost harbour with rail connection in Scandinavia



# International Transportation corridors

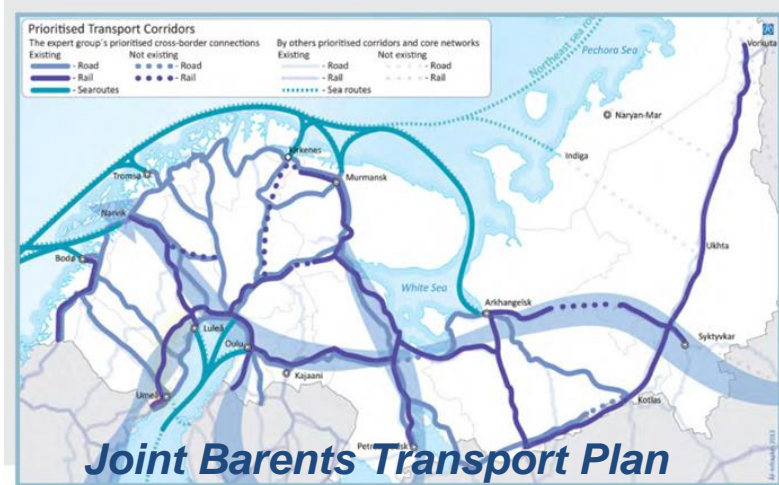
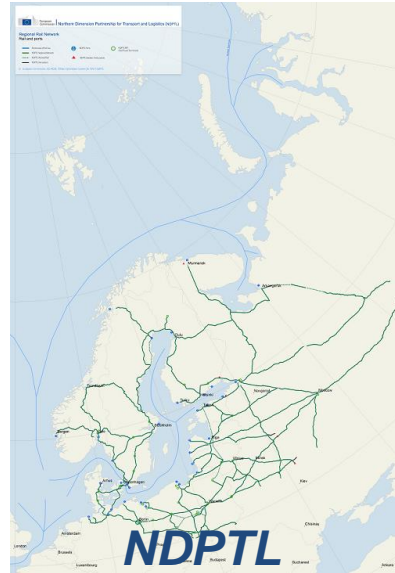
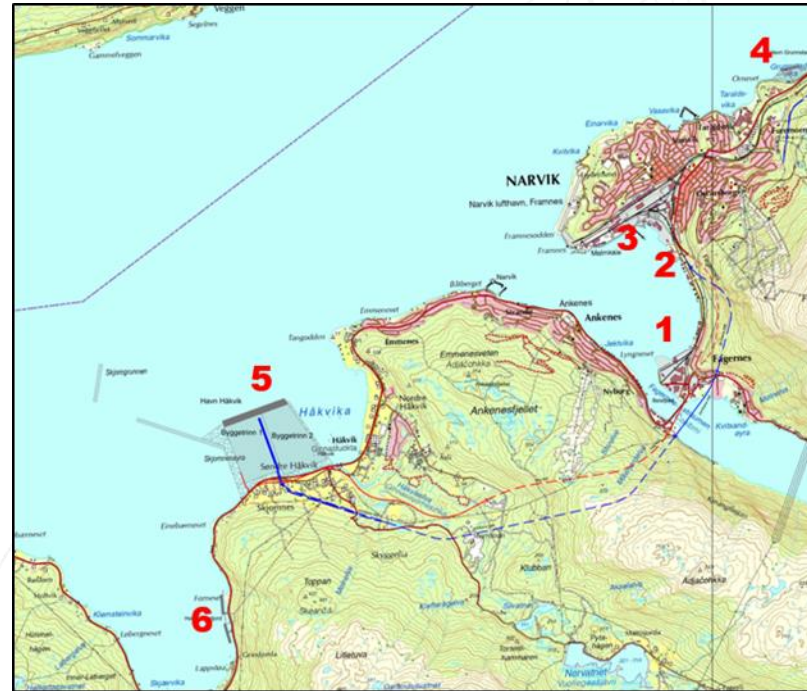


Figure 1: BEATA's Expert Group's prioritized transport network

- TEN -T (Trans European Network Transport), Core Network
- Joint Barents Transport Plan (2013)
- Northern Dimension Partnership on Transport and Logistics; NDPTL Regional Transport Network



# Port of Narvik - Terminals



## Existing terminals:

1. Narvik Terminal  
Container/general cargo and bulk
2. Cental port (Indre havn)  
Passengers, cruise and cargo

## Privately owned terminals:

3. LKAB terminal  
Iron ore and mineral terminal

## Planned terminals:

4. Grunstavvika  
Bulk og mineral terminal
5. Håkvik/Skjomnes  
Container terminal, logistics areas
6. Grindjord  
Bulk og mineral terminal



# European Commission - Extension ScanMed



**A milestone – ScanMed corridor to be extended to northern Sweden**

The extension of the Scandinavian-Mediterranean Corridor will connect with the Swedish core ports of Luleå in Sweden and Narvik in Norway

Proposed extension anticipates growing importance of the Arctic policy

The inclusion of Narvik in the ScanMed corridor will be utmost important for businesses and future traffic





*Thank you for your attention!*

